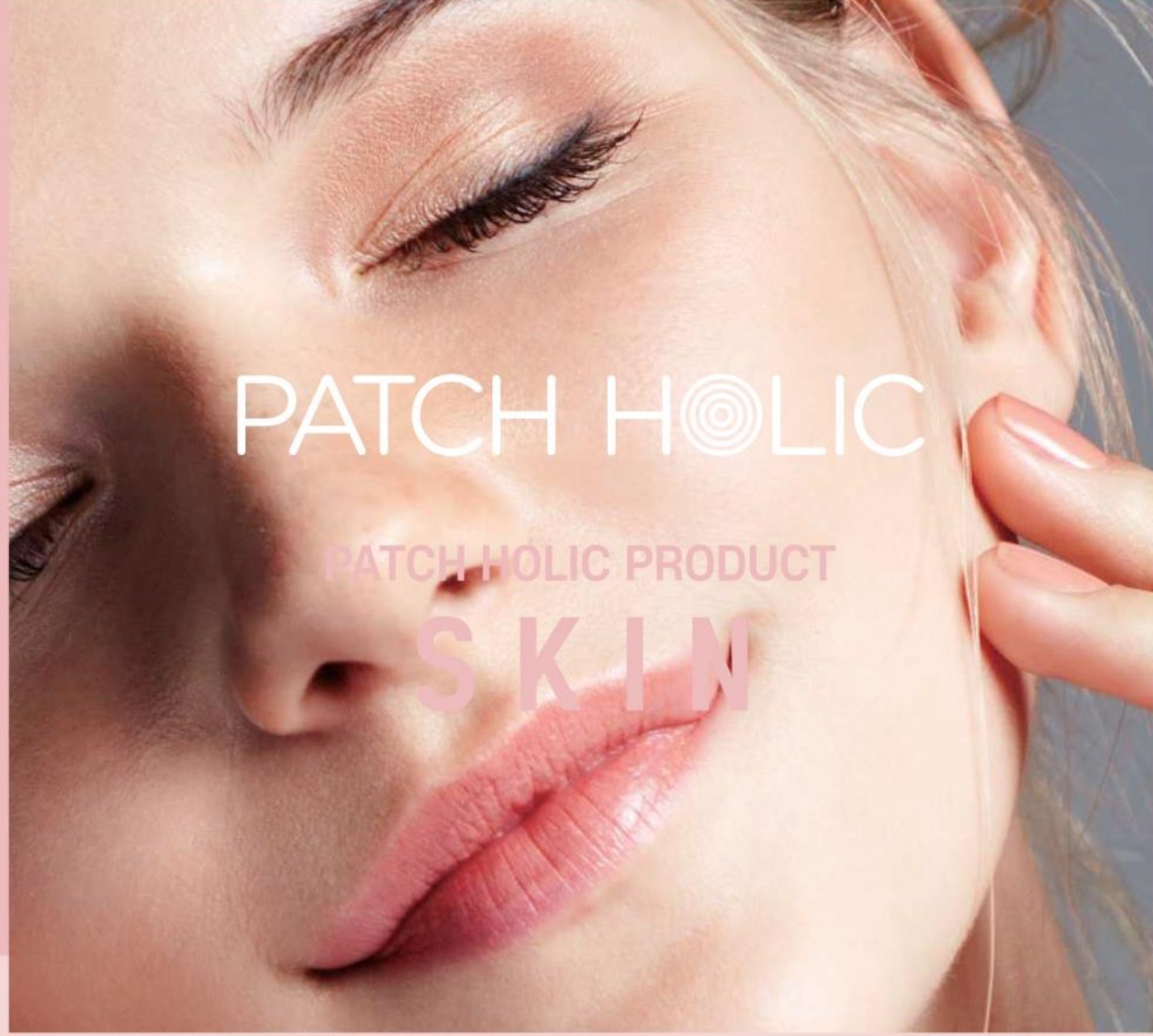


Oh! a pleasant



In your Charming smile!

PATCH HOLIC

I BRAND IDENTITY I

ABOUT PATCH HOLIC



Patch every smiling moment

Happy patch!
Oh! a pleasant
Life is
In your
Charming smile!



Centella asiatica

Collagen

Vita

Ceramide

PURE ENERGY AMPOULE

PATCH HOLIC

N°1



issue 2020
IN SELECTED ITEMS



PURE ENERGY CERAMIDE AMPOULE

Continuous moisturizing care without a moment of dryness
Ampoule that keeps the balance of oil and moisture of skin after cleansing
according to the skin condition of the day
Customized ampoule care to choose according to skin condition

Ampoule with ceramide and hyaluronic acid provides a double synergy effect of strengthening the moisture film and skin barrier.

1. Contains ceramide to give moisturizing radiance

Strong moisturizing shining effect with the combination of ceramid and hyaluronic acid.

2. Real moisturizing film by Beta Glucan

Provides strong moisturizing energy by enhancing the moisturizing power of the skin.

3. A fresh soothing care of the original formula derived from the nature

Mild formula moisturizing at the application and refreshing at the finish.



issue 2020
IN SELECTED ITEMS



PURE ENERGY CICA AMPOULE

Barrier care "CICA" Sensitive skin soothing all-purpose ampoule
All purpose ampoule that strengthens the moisturizing barrier and soothes sensitive skin
Customized ampoule care to choose according to skin condition

It is an ampoule containing green detox complex and 59.4 of centella asiatica extract. It strengthens the natural power of the skin and delivers excellent skin condition recovery power to sensitive skin.

1. Powerful soothing care containing 59.4% of centella asiatica extract
Moisture soothing care containing centella asiatica extract and gree detox complex.
2. Skin basic care by Panthenon
Improves skin barrier by filling the sensitive skin with panthenol.
3. Refreshing natural soothing care of nature derived formula
Nutritious texture that moisturizes and adheres tightly.

PATCH HOLIC



issue 2020
IN SELECTED ITEMS



PURE ENERGY VITA AMPOULE

Radiance care "Vita" radiance ampoule to brighten the dullness
Radiance ampoule that adds moisture to the skin and adds moist energy
with Vita ingredients giving vitality to the skin
Customized ampoule care to choose according to skin condition

**It is a brightening care ampoule containing 82.5%
of Hippophae Rhamnoides Water and panthenol.
It brightens dull skin to make it shiny and smooth.**

1. It contains 82.5% of Hippophae Rhamnoides Extract

It cares the skin to have clean and bright complexion
with Hippophae Rhamnoides Extract

2. It contains hyaluronic acid (aka. moisture magnet) and tocopherol.

It cares the skin to have volume with moisturized radiance by supplying
abundant nutrition

3. Tone care that brightens up when applied

Skin tone care with tight texture



issue 2020
IN SELECTED ITEMS



PURE ENERGY COLLAGEN AMPOULE

Pore Elasticity Ampoule which fills "Collagen" nutrition which tightens pores
It enhances skin elasticity and tightens pores as it is filled with collagen
Customized ampoule care to choose according to skin condition

It is an ampoule containing hydrolyzed collagen and 62% of pomegranate extract. It is an ampoule for elasticity that helps rejuvenate the skin by removing wrinkles and filling the skin with firmness and tightness.

- 1. It firms the skin containing collagen, the elasticity pillar of the skin.**
It presents strong and firm skin as it contains collagen and adenosine ingredients.
- 2. Contains 62% of pomegranate extract, the fruit for women**
Provides rich nutrition and gives volume to the skin.
- 3. Moisturizing lifting texture**
It gently spreads and quickly adheres to the skin for firming effect.

PATCH HOLIC IN SELECTED ITEMS



PATCH HOLIC



issue 2020
IN SELECTED ITEMS



FRESH VITA FOAM CLEANSER

A foam cleanser that gently removes makeup, residues, and skin wastes with fine rich foam. It contains multi-vitamin complex to keep skin moist and clear even after cleansing

Fresh Vita Foam Cleanser for moist and clearskin evenafter cleansing

1. Contains Vita Complex

Bright cleansing without irritation by removing oil and sebum

2. Contains hyaluronic acid, the natural moisturizing factor (NMF)

Moist cleansing with moisturizing ingredients

3. Soft dense foam with silky texture

Removing skin waste with soft texture and rich foam

PATCH HOLIC

N°1



issue 2020
IN SELECTED ITEMS



SIMPLE MOIST CLEANSING WATER

It is a water-type cleanser that provides moisture to the skin which can be easily irritated because of dryness

It cleanses makeup and pore wastes gently and completely
It is a mildly acidic cleansing water containing natural ingredients to keep sensitive skin fresh even after washing

1. Clean skin care with natural ingredients

Deep cleansing not only makeup and skin waste, but also exfoliating dead skin cells by applying and then wiping it off

2. Skin-friendly cleansing

Healthier cleansing care by adjusting the skin pH to weak acid

3. It has essential ingredients only - All nine ingredients are indispensable

Comfortable cleansing with core ingredients, no added color and no added fragrance, no mineral oil (0%)



issue 2020
IN SELECTED ITEMS



MAGIC SNOW WHITENING CREAM

The moist texture captures moisture in the skin making it well-moisturized.

Moist whitening tone up cream
that hides skin trouble and brightens the skin

1. Five second moist care whitening effect

Excellent whitening effect that contains niacinamide and giga complex.

2. Light care that adds moist

The substance that includes pearl extracts makes the skin smooth and bright.

3. Creamy texture that contains moist

No stickiness with milk texture, full of moist.



issue 2020
IN SELECTED ITEMS



CICA + COTTON PAD TONER

Calms and softens sensitive skin with CICA Essence Pad toner that exfoliates and cares for skin texture.

It is a pad toner helping skin soothing care from "Wiping toner" to "Toner Pack" by supplying moist to skin

1. CICA pad effective for skin soothing

Quickly soothes sensitive skin with CICA ingredients / Hypoallergenic soft fabric

2. Multi-purpose pad that can be utilized in various ways

You can use it for various purposes such as make-up correction, topical soothing pack and keratin care.

3. EWG Green Grade

Comfortable toner pad using key ingredients. Applying to the cheeks that became sensitive because of heat! Moisture + soothing



issue 2020

IN SELECTED ITEMS



SIMPLE MOIST AQUA SUN GEL

It protects skin from the irritation by external environments
It is a mild sun gel that makes your skin healthy and moisturized by supplying moisture and nutrition together.

It has a light Water Gel formula which is applied lightly on the skin without stickiness!

- 1. Contains fresh moisture and 65% Aloe Barbadensis Leaf Juice**
Soothes and cares the UV sensitive skin with rich moisture.
- 2. Multi-purpose sun gel without cloudiness**
From city life to outdoor, it blocks UV rays with SPF50+ and PA+++ power sun blocking effects.
- 3. Moist and fresh water-fit sun gel**
Transparent texture without cloudiness and a cool and moist finish.

STICKER SOOTHING PATCH



PATCH HOLIC



All Skin Type
DAY/NIGHT



SOOTHING PATCH VACATION

Fresh cute patch design.

Soothing patches that provide strong moisture to tired skin as well as help soothe and moisturize dull skin.

It protects skin from the irritation by external environments
It is a mild sun gel that makes your skin healthy
and moisturized by supplying moisture and nutrition together.

#Moisturizing #Soothing #Simple

Take the cute patches off one by one.

Put it on your face, arms or legs.

Let your skin be soothing and moisturizing while having fun at the same time.

Tip!

Sticky anti-slip gel type mask pack may be attached to the body that requires intensive care.

PATCH HOLIC



All Skin Type
DAY/NIGHT



SOOTHING PATCH FRUIT

Fresh cute patch design.

Soothing patches that provide strong moisture to tired skin as well as help soothe and moisturize dull skin.

An excellent hydrating and aloe vera leaf extract to help calm the skin, revitalizes the tired skin, moisturizes the skin and provides a cool and soothing effect.

#Moisturizing #Soothing #Simple

Take the cute patches off one by one.

Put it on your face, arms or legs.

Let your skin be soothing and moisturizing while having fun at the same time.

Tip!

Sticky anti-slip gel type mask pack may be attached to the body that requires intensive care.

PATCH HOLIC



All Skin Type
DAY/NIGHT



SOOTHING PATCH UTOPIA

Fresh cute patch design.

Soothing patches that provide strong moisture to tired skin as well as help soothe and moisturize dull skin.

The essence of The essence of and aloe vera leaf extract , which are excellent in calming and moisturizing the skin, gives vitality to the tired skin. It also moisturizes the skin and provides a cool, clean watering effect.

#Moisturizing #Soothing #Simple

Take the cute patches off one by one.

Put it on your face, arms or legs.

Let your skin be soothing and moisturizing while having fun at the same time.

Tip!

Sticky anti-slip gel type mask pack may be attached to the body that requires intensive care.

PATCH HOLIC



All Skin Type
DAY/NIGHT



SOOTHING PATCH PLAY

Fresh cute patch design.

Soothing patches that provide strong moisture to tired skin as well as help soothe and moisturize dull skin.

A mulberry extracts being rich in vitamins and calcium help nourish the skin to be boosted It contains aloe vera leaf extract, which is excellent in skin diagnosis, to provide sensitive and tired skin with cool and clean watering effect.

#Moisturizing #Soothing #Simple

Take the cute patches off one by one.

Put it on your face, arms or legs.

Let your skin be soothing and moisturizing while having fun at the same time.

Tip!

Sticky anti-slip gel type mask pack may be attached to the body that requires intensive care.



COLORPICK MASK5 SKUS



PATCH HOLIC



Aqua Plus +
DAILY MASK



FIRMING & REVITALIZING MASK

For my saggy and cheerless skin, enjoy Elasticity & Firming mask pack with dense elasticity and skin texture care. Protector of moisture barrier. Powerful hydration layer/ Moisture barrier generation/ strengthening skin hydration/ Ultra adhesion mask sheet. 0.14mm

As the result of SCI study proved by the American Dermatological Association, the Idebenone with the strongest antioxidant power provides radiance and energy to the dull skin. Skin elasticity care that replenished from the inside with bright and vitalization.

Pearl extract
strengthening elasticity
by supplying skin nourishment.
Skin tone management to be clear and pure.

Aloe barbadensis leaf extract
Calming & soothing skin care.
Excellent skin moisturizing effect.

PATCH HOLIC



Aqua Plus +
DAILY MASK



FIRMING & HYDRATING MASK

Hydrating mask pack that prevents escaping of water and quenches skin thirst with intensive moisturizing..
Protector of moisture barrier. Strong Hydration layer/ skin barrier generation/ strengthening skin hydration / Super high attachable mask sheet. 0.14mm

'Witch Hazel', an Indian remedy for wound.

Witch Hazel is a magic flower that Indians used extensively for various cosmetic purposes such as moisturizing, maintaining skin cleanliness, and soothing skin since 200 years ago.

Wound remedy 'Witch Hazel'

Antioxidant & Antibacterial
Skin soothing and hydration
Abundant moisture supply & pore tightening
Skin protection from external environment

Wound remedy 'Witch Hazel'

Antioxidant & Antibacterial
Skin soothing and hydration
Abundant moisture supply & pore tightening
Skin protection from external environment

PATCH HOLIC



Aqua Plus +
DAILY MASK



SOOTHING & WATER GLOW MASK

Soothing & Water Glow Mask calming reddish and flush skin.

Protector of moisture barrier.

Strong Hydration layer/ moisture barrier generation/ strengthening skin hydration /

Ultra adhesion mask sheet. 0.14mm

A panacea for skin, 'Centella Asiatica'

Tea tree extract

Trouble,
sensitive skin soothing care,
antibacterial,
anti-inflammatory effect

Chamomile flower extract

Strengthening elasticity
by supplying skin nourishment
Skin tone management
to be clear and pure.

Rose Damascena

Flower extract

Skin calming and soothing care
Excellent skin hydration

PATCH HOLIC



Aqua Plus +
DAILY MASK



NOURISHING & SOFTENING MASK

Nourishing & vitalizing mask pack replenishing tired skin with moisture and nourishment to be vitalized.
Protector of moisture barrier. Strong Hydration layer/ moisture barrier generation/ strengthening skin hydration / Ultra adhesion mask sheet. 0.14mm

'Ceramide Portulaca oleracea & Lotus' for skin moisturizing and nourishment

MAIN | Ceramide
Defense against moisture loss

Portulaca oleracea extract
Excellent hydration effect.

Lotus extract
Natural ceramide ingredients.
Skin hydration. Strengthening Moisturizing.

PATCH HOLIC



Aqua Plus +
DAILY MASK



LUMINOUS & SHINING MASK

Hydrating & luminous mask for dull, cheerless and crumbly skin
Protector of moisture barrier.
Strong Hydration layer/ moisture barrier generation/ strengthening skin hydration/
Ultra adhesion mask sheet. 0.14mm

MAIN | Vitamin C, B12, E vitamin complex
Vitality vital + organic compound Amine

Lemon extract

Vitamin C-rich fruits
Excellent skin brightening
& moisturizing effect

Rice bran extract

Natural ceramide ingredients
Skin hydration, strengthening
moisturizing

Mulberry bark extract

Complexion improvement,
brightening
Intensive hydration.

COSTOPIA DOUBLE CHIN/EYE MASK HAIR MASK/WHIPPING BUBBLE



PATCH HOLIC



Special Ingredients
DAILY MASK



COSTOPIA LOVE HEART DOUBLE CHIN MASK & EYE MASK

Cleans up the loose pace line to V-Zone
Reinforcement/Improving wrinkles/Prevention of aging/Vitalizing/Damage Prevention

Cleans up the loose pace line to V-Zone
Tired eye skin as a mark of time Tighter, Elastic Care

Rose Extract

- Skin moisture care
- Skin flexing effect

Blossom Extract

- Rich in vitamins
- Skin protection, calm, soft, moisturizing

Aloe Vera Extract

- Moisturizing effect for nutritious skin
- Intensive water supply

PATCH HOLIC



Special Ingredients
DAILY MASK



COSTOPIA LOVE HEART DOUBLE CHIN MASK & EYE MASK

Cleans up the loose pace line to V-Zone
Reinforcement/Improving wrinkles/Prevention of aging/Vitalizing/Damage Prevention

Cleans up the loose pace line to V-Zone
Tired eye skin as a mark of time Tighter, Elastic Care

Rose Extract
Skin moisture care
Skin flexing effect

Blossom Extract
Rich in vitamins
Skin protection, calm,
soft, moisturizing

Aloe Vera Extract
Moisturizing effect for
nutritious skin
Intensive water supply

PATCH HOLIC



ALL SKIN TYPE
DAY | NIGHT



COSTOPIA MOISTURE HAIR MASK

92% vegetable ingredients from nature
17 amino acids, 4 natural oils and 3 water sources

The secret to the shiny and silky hair!
Like you're applying a silk essence. A moistened hair pack

Smooth texture completion
17 kinds of hair amino acids

Four natural oils
olive oil, argan oil,
jojoba seed oil and
meadowfoam seed oil

Moisturizing
Rose of Jericho extract,
hyaluronic acid, Trehalose

PATCH HOLIC



ALL SKIN TYPE
DAY | NIGHT



WHIPPING BUBBLE CLEANSING FACIAL PAD

Special microfiber double sided pads
Microfine microfiber cotton / embossed

Decrease skin friction and cleanse waste with rich foam
1-Step Facial Whipping Bubble Cleansing Pad

PHA BHA AHA

Compound peeling component
Helps remove dead skin cells

5-hyaluronic Acid

Immediate moisturizing effect on skin
Intensive water supply

6 Leaf Complex

Natural ingredient, Bergamot leaf extract,
chamomile leaf extract, perilla leaf extract,
apple mint leaf extract, persimmon leaf
extract, basil leaf extract

Oh! a pleasant



In your Charming smile!

[www. Patchholic.com](http://www.Patchholic.com)
smartstore.naver.com/patchholic
www.instagram.com/patch_holic/

TELEPHONE +82 31 378 0819
MOBILE +82 10 8287 0819 / 070-4481-0818
FACSIMILE +82 31 378 0813

E-MAIL patchholic@hncoskin.com
912, Dongtan IT tower,878, Dongtansunhwan-daero, Hwaseong-si,
Gyeonggi-do, Republic of Korea